

Assessment of AUSPOS Performance in New South Wales, Australia

Volker Janssen

Spatial Services

NSW Department of Customer Service, Bathurst NSW 2795, Australia
Tel: +61-2-6332 8426, Email: Volker.Janssen@customerservice.nsw.gov.au

Simon McElroy

Spatial Services

NSW Department of Customer Service, Bathurst NSW 2795, Australia
Tel: +61-2-6332 8300, Email: Simon.McElroy@customerservice.nsw.gov.au

ABSTRACT

AUSPOS is Geoscience Australia's free online Global Positioning System (GPS) processing service. It takes advantage of the International GNSS Service (IGS) network station data and products to compute precise coordinates, using static dual-frequency GPS carrier phase and code data of at least 1 hour duration (recommended minimum of 2 hours duration). This paper outlines how AUSPOS and CORSnet-NSW, Australia's largest state-owned and operated Continuously Operating Reference Station (CORS) network, are used to support datum modernisation and improve state survey infrastructure across New South Wales (NSW), Australia. The quality of AUSPOS solutions is investigated using more than 2,400 successful datasets incorporating observation sessions ranging from 2 hours to 48 hours in length. It is shown that AUSPOS routinely delivers Positional Uncertainty (PU) values at the 0.02-0.03 m level for the horizontal component and about 0.05-0.06 m for the vertical (ellipsoidal) component. As expected, it is evident that a longer observation span improves PU, particularly in regards to the vertical component. The results illustrate why Geoscience Australia stipulates, and NSW supports, a minimum observation span of 6 hours for inclusion into the national GDA2020 adjustment to propagate the Survey Control Network. However, they also show that shorter observation sessions are of sufficient quality to strengthen and improve the State's survey infrastructure, justifying the approach taken by NSW Spatial Services to use AUSPOS as one of several suitable methods to maintain and extend the State's Survey Control Network.

KEYWORDS: AUSPOS, Positional Uncertainty, CORSnet-NSW, datum modernisation, GDA2020, survey infrastructure.

1. INTRODUCTION

Geoscience Australia's free online Global Positioning System (GPS) processing service, AUSPOS, was developed to provide an online positioning service primarily for Australian users (Jia *et al.*, 2014; GA, 2020a). Since its initial release in 2000, it has frequently been upgraded in order to incorporate improvements. For example, this included switching to the Bernese Global Navigation Satellite System (GNSS) software processing engine in 2010, introducing a more realistic assessment method of coordinate uncertainty in 2013 and upgrading to the latest Bernese software version 5.2 (Dach *et al.*, 2015) in 2015 (Jia *et al.*, 2016). In order to support national datum modernisation efforts, AUSPOS started delivering results in both GDA94 and GDA2020 (ICSM, 2020a), as well as ITRF2014 (Altamimi *et al.*, 2016), with version 2.3 in November 2017. However, it remains GPS-only. AUSPOS was ranked highest in a comparison of free online services for GPS post-processing (Gakstatter and Silver, 2013) and has successfully processed more than 1 million jobs worldwide over the last 10 years (M. Jia, pers. comm.).

AUSPOS takes advantage of the International GNSS Service (IGS) network station data and products (e.g. final, rapid or ultra-rapid orbits depending on availability – see IGS, 2020) to compute precise coordinates, using static dual-frequency GPS carrier phase and code data of at least 1 hour duration (recommended minimum of 2 hours, maximum of 7 consecutive days). When submitting 30-second Receiver Independent Exchange (RINEX) data, users are required to specify the antenna type (using the international IGS naming convention) and the antenna height to the Antenna Reference Point (ARP). Following processing, an AUSPOS report (pdf) is emailed to the user, which includes the computed coordinates and their uncertainties, ambiguity resolution statistics, and an overview of the GPS processing strategy applied. Solution Independent Exchange (SINEX) files containing more detailed information about the AUSPOS solution are also made available to the user.

CORSnet-NSW is Australia's largest state-owned and operated Continuously Operating Reference Station (CORS) network (e.g. Janssen *et al.*, 2016; NSW Spatial Services, 2020a). It is built, owned and operated by Spatial Services, a unit of the NSW Department of Customer Service. CORSnet-NSW currently consists of 202 stations, providing fundamental positioning infrastructure that is authoritative, accurate, reliable and easy-to-use for a wide range of applications across NSW. CORSnet-NSW sites comprise a fundamental, high-density and long-term component of AUSPOS infrastructure within the State. In February 2019, CORSnet-NSW started delivering services in both GDA94 and GDA2020. Since May 2019, it provides all-in-view, all-signals, multi-constellation GNSS data (i.e. GPS, GLONASS, BeiDou, QZSS and Galileo), making it the nation's first CORS network to reach this milestone. At any given time, CORSnet-NSW stations typically deliver at least 40 satellites in view.

All CORSnet-NSW stations are part of the Asia-Pacific Reference Frame (APREF – see GA, 2020b), including 13 concrete-pillared NSW sites incorporated into the IGS network. For AUSPOS processing, up to 15 surrounding IGS and APREF stations are used as the reference stations, generally the 7 closest IGS sites and the 8 closest APREF sites (Jia *et al.*, 2014). This approach provides a relatively dense network for generating a reliable regional ionospheric delay model and tropospheric delay corrections to support ambiguity resolution. Based on these reference stations, a precise solution for the user data is then computed using the double-differencing technique. The coordinates of the IGS stations are constrained with uncertainties of 1 mm for horizontal position and 2 mm for the vertical, while other CORS coordinates are

constrained with uncertainties of 3 mm for horizontal position and 6 mm for the vertical (due to the shorter CORS operation time span, lower data quality and/or inferior monumentation).

The GPS data is processed in the IGS realisation of the ITRF2014 reference frame and then transformed to GDA2020 by application of a plate model transformation. Derived Australian Height Datum (AHD – see Roelse *et al.*, 1971) heights are computed by applying a gravimetric-geometric quasigeoid model (AUSGeoid2020 – see Brown *et al.*, 2018; Janssen and Watson, 2018; Featherstone *et al.*, 2019) to the GDA2020 ellipsoidal heights. Legacy GDA94 coordinates are obtained from GDA2020 by coordinate transformation. More information about GDA94 and GDA2020, along with their technical manuals, can be found on the Intergovernmental Committee on Surveying and Mapping (ICSM) website (ICSM, 2020a).

Positional Uncertainty (PU) is calculated based on the East, North and ellipsoidal height coordinate uncertainties according to the Guideline for Adjustment and Evaluation of Survey Control, which is part of ICSM's Standard for the Australian Survey Control Network (SP1), version 2.1 (ICSM, 2014). The coordinate uncertainties of the East, North and ellipsoidal height components are scaled using an empirically derived model, which is a function of duration, data quality and geographical location (latitude and CORS density), and expressed at the 95% confidence level (Jia *et al.*, 2016).

This paper outlines how AUSPOS and CORSnet-NSW are used to support datum modernisation and improve state survey infrastructure across NSW. The quality of AUSPOS solutions is investigated using more than 2,400 successful datasets, incorporating observation sessions ranging from 2 hours to 48 hours in length.

2. USING AUSPOS TO SUPORT DATUM MODERNISATION AND IMPROVE SURVEY INFRASTRUCTURE IN NSW

Datum modernisation and further improvement of survey infrastructure is required in order to accommodate the increasing accuracy and improved spatial and temporal resolution available from modern positioning technologies to an ever-broadening user base concerned with surveying, mapping, navigation, engineering, machine guidance and precision agriculture, to name but a few.

All CORSnet-NSW stations contribute to the AUSPOS service, i.e. most NSW users are close to a dense network of surrounding CORS. As demonstrated in the next section, this results in strong AUSPOS processing results even for shorter observation sessions of at least 2 hours, provided sky view conditions are reasonable. Consequently, the use of AUSPOS campaigns has developed into a capable and reliable alternative to conducting traditional static GNSS baseline surveys (e.g. Gowans *et al.*, 2015; Janssen and Watson, 2018), simplifying logistics by removing the requirement of field crews having to occupy particular survey marks at a set time. As a consequence, processing, adjustment and report writing efforts have been significantly reduced or removed, and office time is typically cut to 1 hour per day per survey crew in the field. AUSPOS also forms a new and fundamental component of vertical datum modernisation and the propagation of the Australian Vertical Working Surface (AVWS – see ICSM, 2020b) in the State.

NSW Spatial Services will therefore continue to apply this proven approach to improve the State's Survey Control Network, with appropriate Class being assigned in accordance with

ICSM (2007) and Surveyor General's Direction No. 12 (Control Surveys and SCIMS) (NSW Spatial Services, 2019), and uncertainty as described in Janssen *et al.* (2019). To this end, AUSPOS data of at least 6 hours duration is used to propagate the datum in NSW, while AUSPOS data of less than 6 hours duration strengthens the datum. The profession is encouraged to contribute to these efforts by submitting suitable AUSPOS data and related metadata (NSW Spatial Services, 2020b) in order to facilitate the update of survey information on public record in the Survey Control Information Management System (SCIMS). SCIMS is the State's database containing about 250,000 survey marks across NSW, including coordinates, heights, accuracy classifications and other metadata, provided in GDA94, GDA2020 and AHD (Janssen *et al.*, 2019).

At present, the GDA2020 state adjustment incorporates approximately 30,000 survey control marks across NSW, i.e. 12% of all marks in SCIMS. Consequently, 88% of the marks in SCIMS are currently transformed from GDA94 to GDA2020. Uncertainties of these transformed GDA2020 coordinates are given null values until these are calculated via inclusion in the state adjustment. As shown in this paper, AUSPOS is a suitable method to accelerate the process of including additional survey marks into the state adjustment in order to improve user access to GDA2020 coordinates and uncertainties across the State.

In support of these datum modernisation efforts, NSW Spatial Services is currently building an updated 'passive' Survey Control Network (in the Eastern and Central Divisions) with a minimum of one fundamental survey mark observed by 6+ hour AUSPOS every 10 km. Its vision is to ensure that any future user is no further than 5 km (and often much less) from such a fundamental mark providing direct connection to datum. Similarly, levelled AHD marks are observed by 6+ hour AUSPOS every 10 km, often at a far greater density. This will allow users to achieve NSW Spatial Services' vision of a Positional Uncertainty (PU) of 20 mm in the horizontal and 50 mm in the vertical (ellipsoidal height) component anywhere in the State and easily apply transformation tools to move between current, future and various historical datums and local working surfaces (e.g. railway datum or standard datum).

Following successful AUSPOS processing (GPS-only, using final IGS products) by NSW Spatial Services, GNSS data of more than 6 hours duration (with a maximum observation length of 48 hours) is submitted to Geoscience Australia toward the National GNSS Campaign Archive (NGCA) database of 6+ hour AUSPOS datasets. Currently, this data is grouped into simultaneously observed sessions and processed through an *offline* AUSPOS engine with the results expressed as baselines to nearby CORS, rather than absolute measurements of position. This avoids introducing additional adjustment constraints outside of APREF.

GNSS data of 2-6 hour duration is handled according to a similar principle but brought about by slightly different means. Again following successful AUSPOS processing by NSW Spatial Services to verify the required data quality, the *online* AUSPOS results are transformed to be expressed as baselines to nearby CORS.

3. EVALUATING THE QUALITY OF AUSPOS SOLUTIONS ACROSS NSW

3.1 Data and Testing Methodology

The quality of AUSPOS solutions was investigated using 2,618 GNSS datasets observed by NSW Spatial Services over the last 5 years, between November 2014 and August 2019, under

typical conditions generally encountered in practice and incorporating observation sessions ranging from 2 hours to 48 hours in length. These datasets were processed individually with the *online* AUSPOS version 2.3 (GA, 2020a), using final IGS products.

A small number of AUSPOS solutions was rejected for this analysis due to warnings in the AUSPOS report, referring to poor ambiguity resolution and/or large uncertainties. Overall, 154 sessions (5.9%) were rejected, including 121 (10.1%) of the 2-6 hour sessions and 33 (2.3%) of the 6-48 hour sessions. Upon investigation of site photos and other metadata, this was generally attributed to ambitious attempts to observe survey marks in locations with substantial tree cover, resulting in poor sky view conditions. As expected, shorter observation sessions were more prone to be negatively affected by these unfavourable conditions.

For all 2,464 successful AUSPOS solutions (with almost 44% of these being 2-6 hour sessions), descriptive statistics were then used to evaluate the uncertainties of the resulting GDA2020 coordinates. Positional Uncertainty (PU) is defined as the uncertainty of the horizontal and/or vertical coordinates of a point, at the 95% confidence level, with respect to the defined reference frame (datum) (ICSM, 2014). A description of the practical implementation of PU in NSW (particularly SCIMS) can be found in Janssen *et al.* (2019).

Three tests were performed to investigate the quality of AUSPOS solutions in NSW:

- 1) Analysing Horizontal PU (HPU) and Vertical PU (VPU) of the AUSPOS solutions for GDA2020 horizontal coordinates and GDA2020 ellipsoidal heights, respectively.
- 2) Analysing the quality of AUSPOS solutions for reoccupations on the same mark.
- 3) Analysing the connection to AHD by comparing the AUSPOS-derived AHD height (using AUSGeoid2020) to levelled AHD heights of sufficient quality on public record and investigating the AHD-PU reported by AUSPOS.

The results of these three tests are presented and discussed in the following sections. Figure 1 shows the location of the 2,464 successful AUSPOS solutions analysed in this study, colour-coded to indicate observation length.

Two further tests were conducted, the results of which can be immediately summarised:

- Whilst AUSPOS uncertainty is known to be affected (scaled) by latitude, this effect shows negligible variation for user results within the bounds of NSW.
- Whilst IGS products have continuously improved and CORS density has increased, resulting AUSPOS version 2.3 performance has remained stable, predictable, repeatable and of high quality within NSW.

3.2 PU of AUSPOS Solutions

Horizontal PU (HPU) and Vertical PU (VPU) of the AUSPOS-derived GDA2020 horizontal coordinates and GDA2020 ellipsoidal heights were obtained from the SINEX file associated with each AUSPOS solution (these values are also stated in the AUSPOS report). Table 1 summarises descriptive statistics regarding HPU and VPU for the entire dataset of 2,464 successful AUSPOS solutions (2-48 hour duration), also providing this information for the 2-6 hour and 6-24 hour subsets, respectively, to allow examination of the effect the observation session length has on the resulting uncertainties. Figure 2 provides a graphical visualisation of the results, showing PU as a function of observation session length.

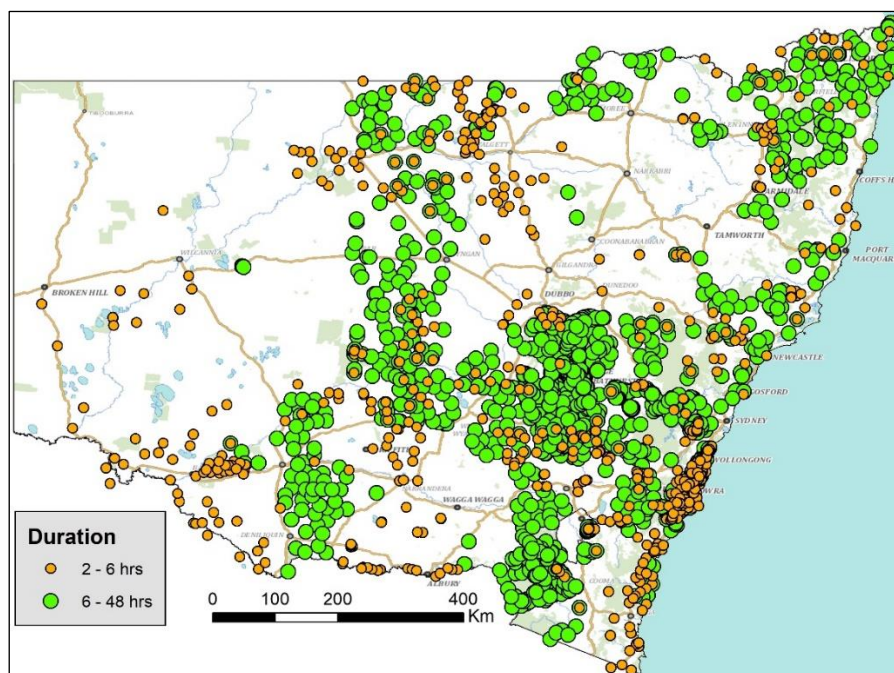


Figure 1. Location of the 2,464 successful AUSPOS solutions analysed across NSW, colour-coded to indicate observation length.

Table 1 and Figure 2 show that the majority of solutions meet or are better than the 20 mm HPU and 50 mm VPU thresholds targeted by NSW Spatial Services. The benefit of longer observation sessions is demonstrated by mean values of $0.023 \text{ m} \pm 0.006 \text{ m}$ (1 sigma) for HPU and $0.069 \text{ m} \pm 0.022 \text{ m}$ (1 sigma) for VPU when using 2-6 hour data, compared to values of $0.015 \text{ m} \pm 0.003 \text{ m}$ (1 sigma) for HPU and $0.033 \text{ m} \pm 0.016 \text{ m}$ (1 sigma) for VPU when using 6-24 hour data. This supports the notion that AUSPOS data of 6+ hour duration is used to propagate the datum, while AUSPOS data of less than 6 hours duration strengthens the datum. The median values indicate that no significant offsets caused by possible outliers are present.

Dataset	Statistic	HPU	VPU
Entire dataset: 2,464 solutions	Min.	0.011	0.015
	Max.	0.074	0.161
	Range	0.063	0.146
	Median	0.017	0.042
	Mean	0.018	0.048
	STD	0.006	0.026
2-6 hour data: 1,076 solutions	Min.	0.014	0.029
	Max.	0.074	0.141
	Range	0.060	0.111
	Median	0.022	0.065
	Mean	0.023	0.069
	STD	0.006	0.022
6-24 hour data: 1,280 solutions	Min.	0.011	0.018
	Max.	0.042	0.161
	Range	0.031	0.143
	Median	0.014	0.027
	Mean	0.015	0.033
	STD	0.003	0.016

Table 1. Descriptive statistics for the HPU and VPU analysis (all values in metres).

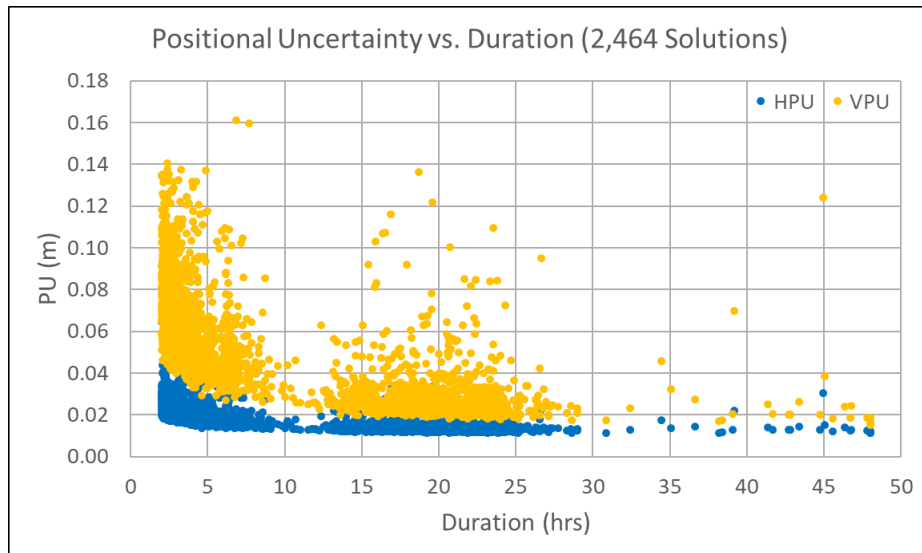


Figure 2. Positional Uncertainty (PU) vs. duration for the entire dataset (2,464 solutions).

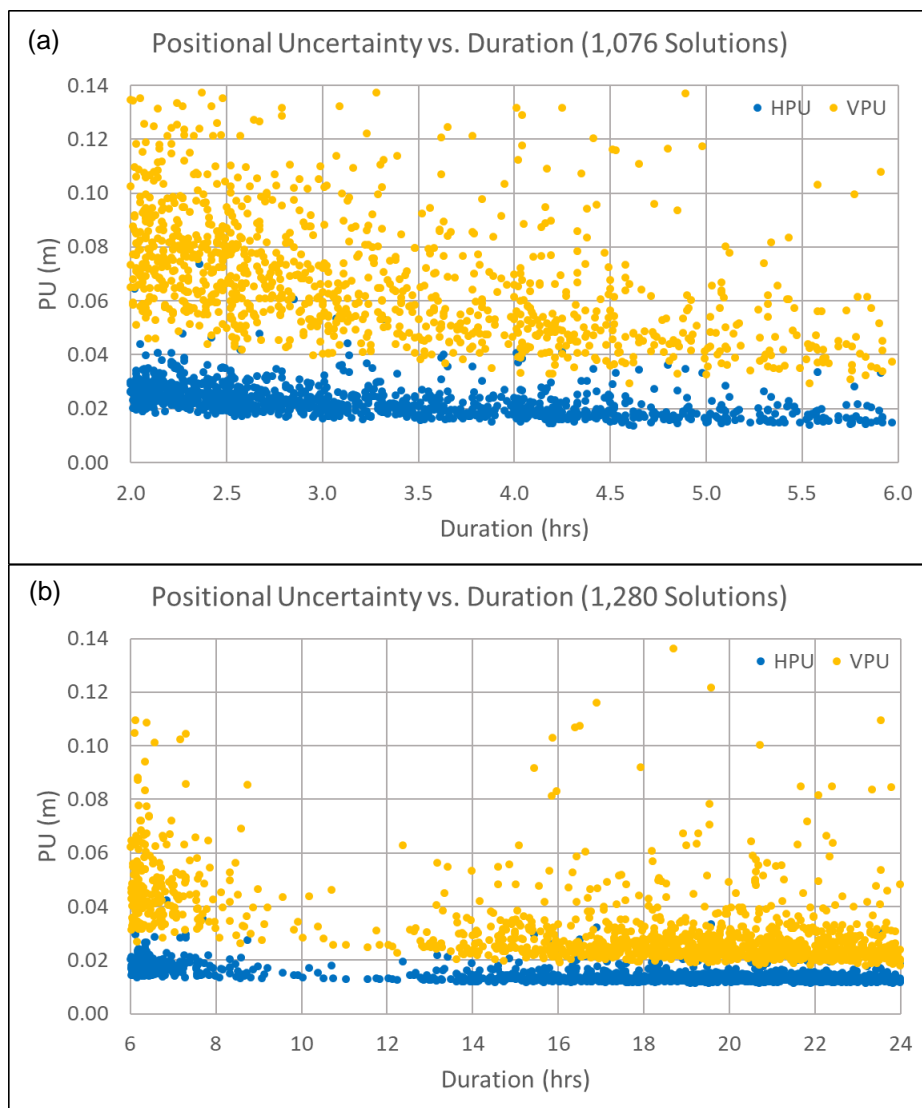


Figure 3. Positional Uncertainty (PU) vs. duration for (a) 2-6 hour data (1,076 solutions), and (b) 6-24 hour data (1,280 solutions).

Figure 3 investigates the data shown in Figure 2 in more detail. It is evident that (as expected) a longer observation span generally improves PU. Most of the improvement is gained by increasing the observation length from 2 hours to about 4-5 hours (Figure 3a), with minor but not insignificant improvement when the observation span is increased to 24 hours (Figure 3b). Observation sessions exceeding 12 hours provide AUSPOS solutions of substantially higher quality in the vertical component. An investigation of site photos and other metadata attributed the larger VPU values evident for some solutions greater than 15 hours duration to poor sky view conditions caused by substantial tree cover.

The cumulative distribution allows the percentage of AUSPOS solutions meeting a particular PU threshold to be quantified. Figure 4 visualises the cumulative distribution in regards to HPU and VPU for the entire dataset as well as the 2-6 hour and 6-24 hour subsets.

It shows that across the entire dataset, 70.6% of the AUSPOS solutions have HPU values of 0.02 m or better, i.e. these survey marks have an absolute horizontal accuracy slightly larger than the size of a 50c piece (radius of 16 mm) with respect to the national datum. This includes 38.6% of the 2-6 hour AUSPOS solutions and 95.2% of the 6-24 hour solutions with HPU values at this level. Similarly, 95.7% of all solutions have HPU values of 0.03 m or better, including 90.8% of the 2-6 hour solutions and 99.5% of the 6-24 hour solutions.

In regards to the vertical component (ellipsoidal height), 61.0% of the AUSPOS solutions have VPU values of 0.05 m or better across the entire dataset in absolute terms. This includes 23.3% of the 2-6 hour AUSPOS solutions and 89.7% of the 6-24 hour solutions with VPU values at this level. These results are impressive, remembering that the uncertainties are stated at the 95% confidence level. Again, as expected, it is evident that a longer observation span improves PU, particularly in regards to the vertical component. Similarly, 71.8% of all solutions have VPU values of 0.06 m or better, including 42.7% of the 2-6 hour solutions and 94.3% of the 6-24 hour solutions.

These results clearly show the important role of AUSPOS in propagating and strengthening the Survey Control Network in NSW. This investigation confirms and expands on earlier findings by Jia *et al.* (2014), illustrating why Geoscience Australia stipulates (and NSW supports) a minimum observation span of 6 hours for direct inclusion into the national GDA2020 adjustment. It also shows that shorter observation sessions are of sufficient quality to improve the State's survey infrastructure, justifying the approach taken by NSW Spatial Services to use AUSPOS as one of several suitable methods that can be used for this purpose (see section 2).

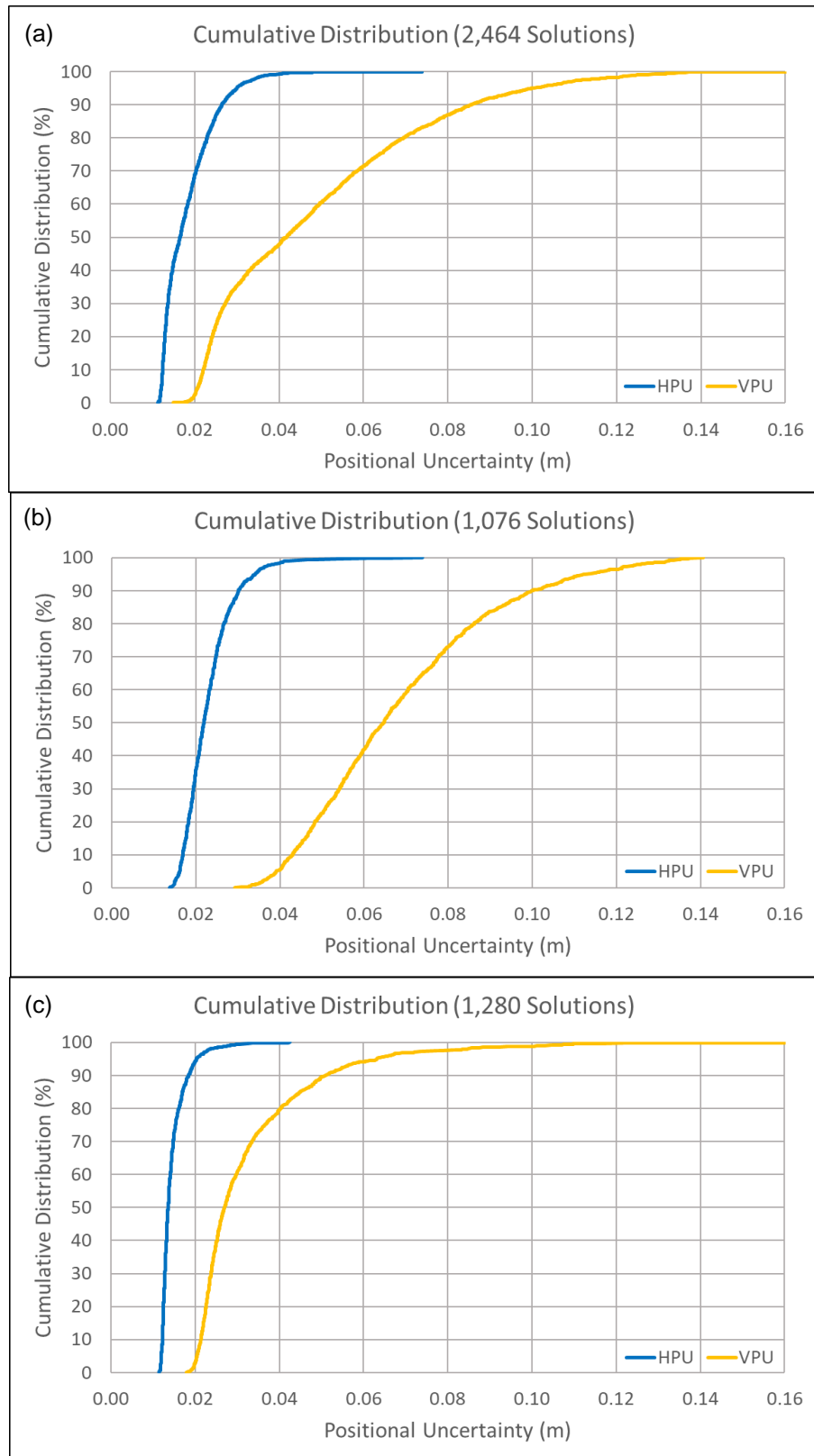


Figure 4. Cumulative distribution of PU for (a) the entire dataset (2,464 solutions), (b) 2-6 hour data (1,076 solutions), and (c) 6-24 hour data (1,280 solutions).

3.3 Investigating Reoccupations

This section investigates the quality of AUSPOS results for independent reoccupations on the same mark. Where possible from the dataset discussed in section 3.2, independent pairs of sessions on the same mark were selected for three scenarios: two short sessions (2-6 hrs), one short (2-6 hrs) and one long session (6+ hrs), and two long sessions (6+ hrs). In each case, each session was only paired once. Since it is necessary to consider coordinate differences of opposite signs, the Root Mean Square (RMS) is deemed appropriate to quantify the average agreement in the vertical component.

Table 2 summarises descriptive statistics referring to the horizontal distance between the two AUSPOS solutions, as well as the difference in ellipsoidal height (shorter session minus longer session). Figure 5 visualises these results graphically. Again, it is evident that AUSPOS produces high-quality positioning results. While longer observation sessions improve the precision (repeatability) and reduce the risk of outliers (range), shorter sessions provide results suitable for improving state survey infrastructure. The median values indicate that no significant offsets caused by possible outliers are present.

It should be noted that the AUSPOS results are not compared to the marks' GDA2020 coordinates on public record in SCIMS because such an investigation of accuracy would only be possible for shorter sessions on established marks that are part of the NSW state adjustment. An independent appraisal of accuracy for shorter AUSPOS sessions may be undertaken at a later stage, once more SCIMS marks are included in the state adjustment.

Dataset	Statistic	Diff in Hz	Diff in EHGT
Short sessions: 145 pairs	Min.	0.001	-0.079
	Max.	0.083	0.119
	Range	0.082	0.199
	Median	0.010	0.000
	Mean	0.013	0.000
	STD	0.009	0.026
	RMS	0.016	0.026
Short-long sessions: 75 pairs	Min.	0.003	-0.044
	Max.	0.043	0.050
	Range	0.041	0.094
	Median	0.010	0.003
	Mean	0.011	0.000
	STD	0.008	0.021
	RMS	0.015	0.021
Long sessions: 94 pairs	Min.	0.001	-0.064
	Max.	0.029	0.072
	Range	0.028	0.137
	Median	0.006	-0.002
	Mean	0.008	-0.002
	STD	0.006	0.019
	RMS	0.010	0.019

Table 2. Descriptive statistics for reoccupied pairs (all values in metres).

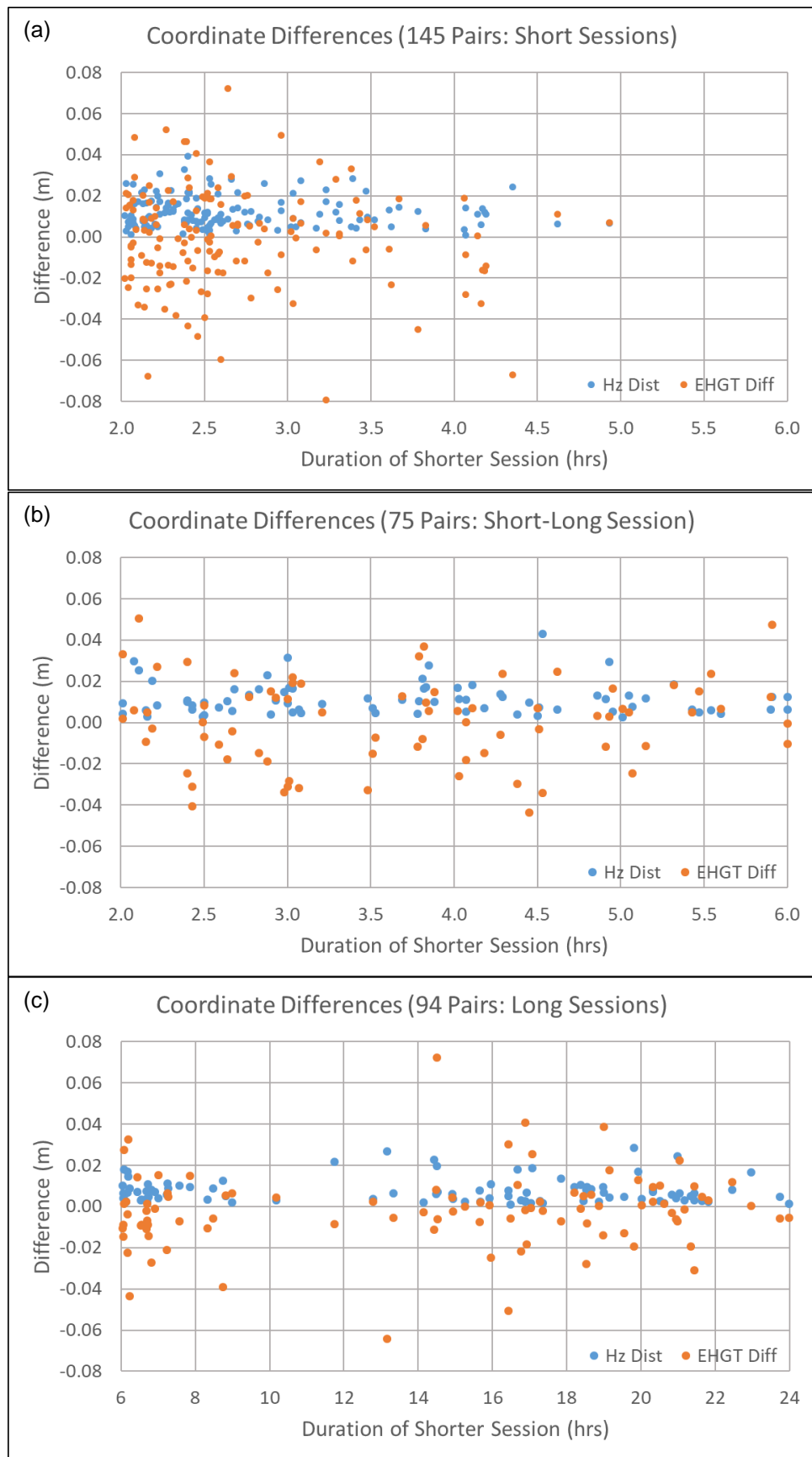


Figure 5. Difference in horizontal and vertical coordinates vs. duration for (a) 145 short-session pairs, (b) 75 short-long-session pairs, and (c) 94 long-session pairs.

In July/August 2019, TS3663 PANORAMA (located in Bathurst, close to NSW Spatial Services) was occupied 38 times, providing an opportunity to investigate the repeatability of AUSPOS solutions on this high-quality, concrete-pillared mark. The longest observation session (48 hours) was assumed ground truth, with the AUSPOS results of the shorter sessions being compared against it (Figure 6). The average agreement is found to be $0.006 \text{ m} \pm 0.003 \text{ m}$ (1 sigma) in the horizontal component, and the RMS in the vertical component (ellipsoidal height) is 0.010 m (1 sigma), showing that observation sessions of less than 6 hours in length have high reliability and repeatability. A bullseye plot of the difference in horizontal position from the 48-hour solution is shown in Figure 7, providing a spatial perspective and illustrating the high precision of these results.

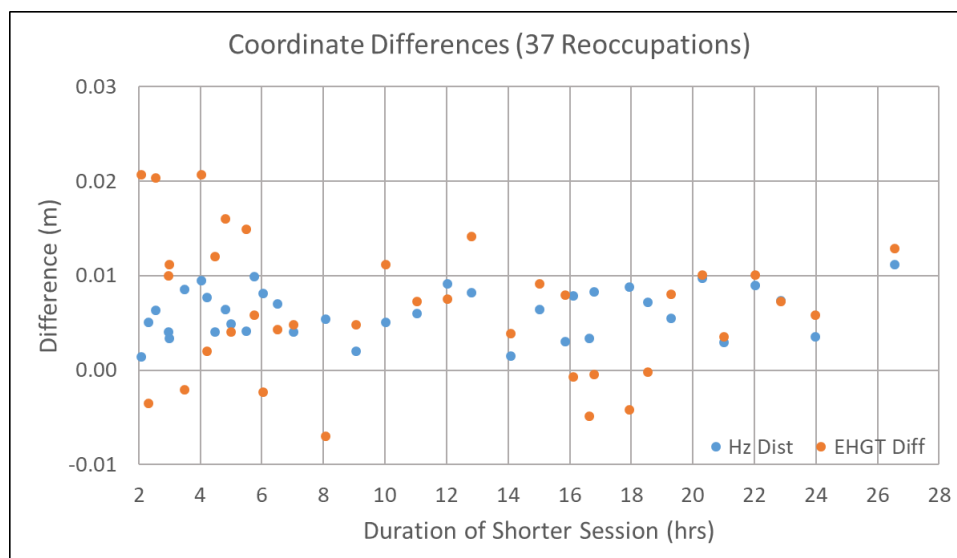


Figure 6. Difference in horizontal and vertical coordinates vs. duration for TS3663 PANORAMA (37 reoccupations).

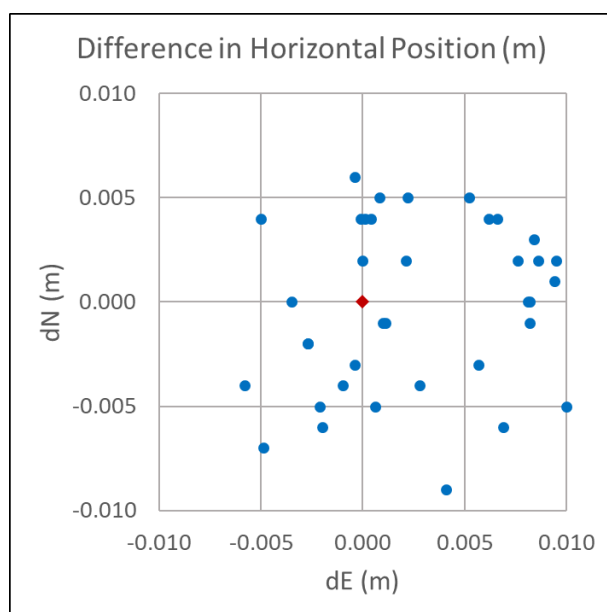


Figure 7. Difference in horizontal position from 48-hour solution for TS3663 PANORAMA (37 reoccupations).

Figure 8 depicts the PU values corresponding to these AUSPOS solutions, again illustrating the benefit of longer observation sessions. The ‘smoothness’ of the PU curves also confirms that the PU values provided by AUSPOS are calculated (scaled) with significant influence and predictability of the observation session length.

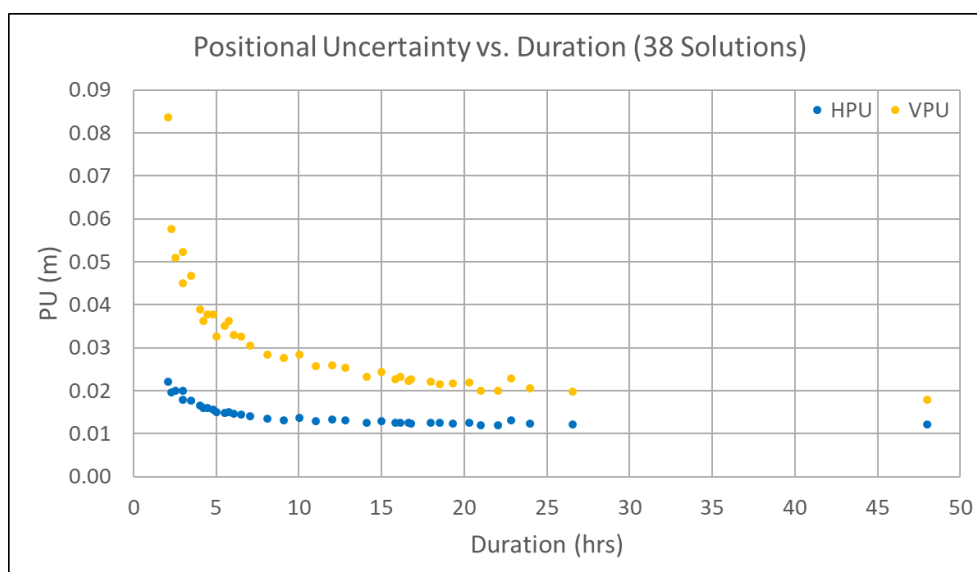


Figure 8. Positional Uncertainty (PU) vs. duration for TS3663 PANORAMA (38 solutions).

3.4 Connection to AHD via AUSPOS

The quality of AUSPOS solutions with regards to providing a connection to AHD was investigated by comparing the derived AHD height determined by AUSPOS (using AUSGeoid2020) to levelled AHD heights of sufficient quality on public record in SCIMS.

The data investigated is a subset of the AUSPOS solutions analysed in section 3.2 and independent of the data used to produce the current version of AUSGeoid2020 (version 01/02/2018). This subset comprises marks that have AHD heights of class LC or better in SCIMS. To ensure full independence, observation sessions exceeding 6 hours duration are only considered for data collected after 1 February 2018, i.e. the date the current version of AUSGeoid2020 was computed. Again, since it is necessary to consider coordinate differences of opposite signs, the RMS is used to quantify the average agreement to AHD.

Table 3 summarises descriptive statistics referring to the difference between the AUSPOS-derived AHD height (using AUSGeoid2020) and the levelled AHD height on public record in SCIMS, as well as the derived AHD-PU provided by AUSPOS. These statistics are provided separately for the entire subset, the 2-6 hour data and the 6-24 hour data, respectively. Figure 9 visualises these results graphically.

It can be seen that the AUSPOS solutions are consistent across all marks and observation durations, delivering AHD heights with an RMS of about 0.040 m (1 sigma) or 0.078 m (95% confidence level) and a range of about 0.35 m (-0.20 m to +0.15 m). It is also evident that the derived AHD-PU reported by AUSPOS appears to be overly conservative for the data investigated, providing a mean AHD-PU of 0.182 m, which is more than double the RMS value for the difference to the levelled AHD height at the 95% confidence level (i.e. about 0.078 m).

This can be explained by the conservative AUSGeoid2020 uncertainty grid values applied (the best-case official AUSGeoid2020 uncertainty in NSW is about 0.14 m at the 95% confidence level). The interested reader is referred to Brown *et al.* (2018), Janssen and Watson (2018) and Featherstone *et al.* (2019) for more information and discussion on this topic.

Dataset	Statistic	Diff to AHD	Derived AHD-PU
Entire subset: 810 solutions	Min.	-0.206	0.147
	Max.	0.148	0.251
	Range	0.354	0.104
	Median	-0.012	0.179
	Mean	-0.012	0.182
	STD	0.038	0.016
	RMS	0.040	0.183
2-6 hour data: 394 solutions	Min.	-0.201	0.160
	Max.	0.148	0.233
	Range	0.349	0.073
	Median	-0.011	0.180
	Mean	-0.013	0.183
	STD	0.036	0.012
	RMS	0.039	0.183
6-24 hour data: 383 solutions	Min.	-0.206	0.147
	Max.	0.104	0.251
	Range	0.310	0.104
	Median	-0.011	0.175
	Mean	-0.010	0.181
	STD	0.040	0.019
	RMS	0.041	0.182

Table 3. Descriptive statistics for AHD analysis, considering levelled marks only (all values in metres).

4. CONCLUSIONS

Spatial Services, on behalf of the NSW Surveyor General, has a legislative, regulative responsibility to maintain and extend the Survey Control Network in NSW. This paper has outlined how AUSPOS and CORSnet-NSW are used together in order to support datum modernisation and improve state survey infrastructure across NSW. Using more than 2,400 successful AUSPOS datasets, incorporating observation session lengths between 2 hours and 48 hours, the quality of AUSPOS solutions was investigated.

It was shown that AUSPOS routinely delivers realistic Positional Uncertainty values at the 0.02-0.03 m level for the horizontal component and about 0.05-0.06 m for the vertical component. As expected, a longer observation span improves PU. Most of the improvement is gained by increasing the observation length from 2 hours to about 4-5 hours. Observation sessions exceeding 12 hours provide AUSPOS solutions of substantially higher quality in the vertical component. Results vary negligibly with location (latitude) within the bounds of NSW and have a high degree of predictability/repeatability at sites with good sky view. AUSPOS solutions at those sites with tree cover achieve acceptable HPU and heights with a VPU of better than 0.1 m. It was also shown that the derived AHD-PU values reported by AUSPOS appear to be overly conservative for the data investigated, due to the conservative AUSGeoid2020 uncertainty grid values applied.

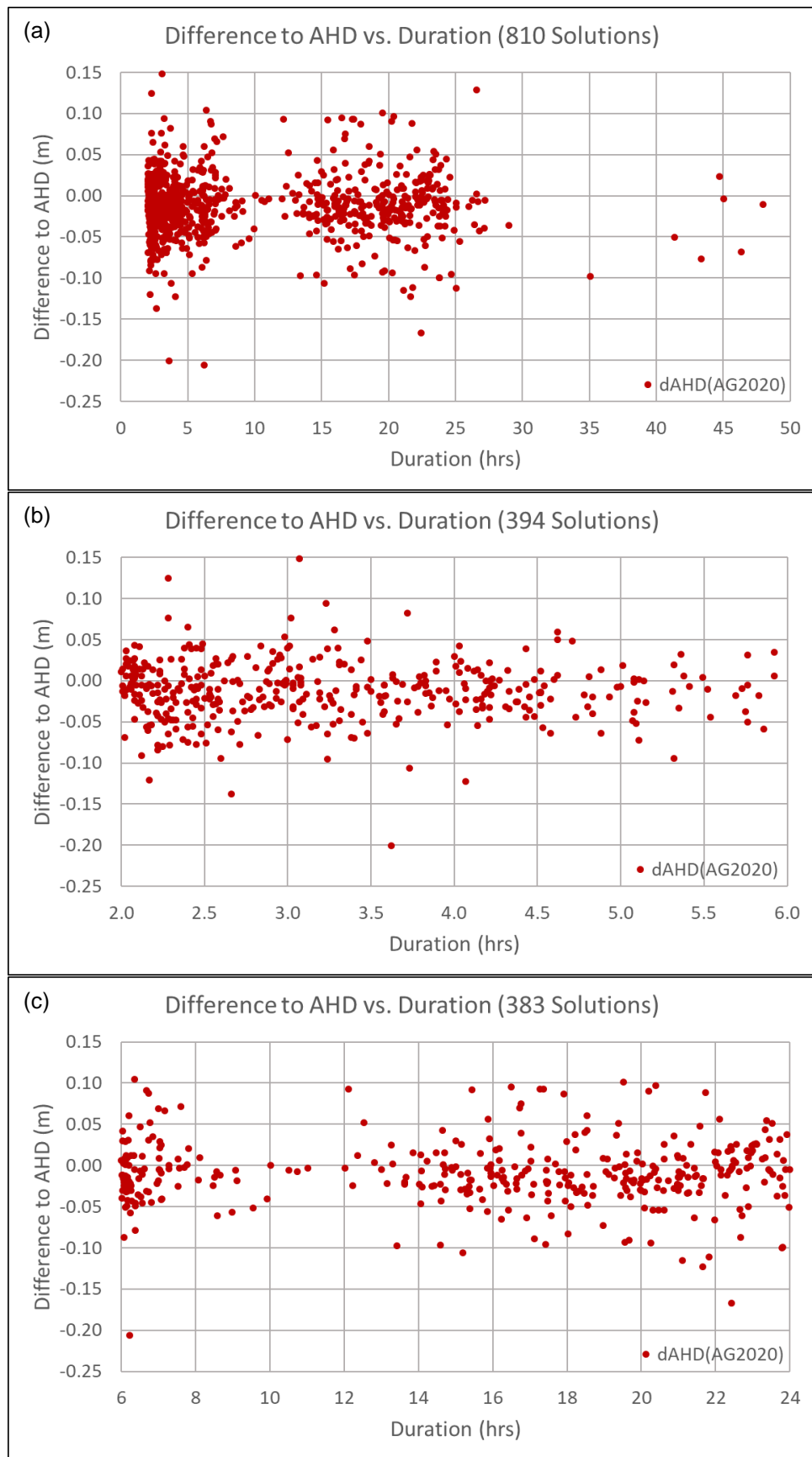


Figure 9. Agreement to levelled AHD vs. duration for (a) the entire subset (810 solutions), (b) 2-6 hour data (394 solutions), and (c) 6-24 hour data (383 solutions).

These results illustrate why Geoscience Australia stipulates, and NSW supports, a minimum observation span of 6 hours for direct inclusion into the national GDA2020 adjustment to propagate the Survey Control Network. They also show that shorter observation sessions are of sufficient quality to improve and strengthen the state survey infrastructure, provided sky view conditions are reasonable. This justifies the approach taken by NSW Spatial Services to use AUSPOS as one of several suitable methods to maintain and extend the State's Survey Control Network.

REFERENCES

- Altamimi Z, Rebischung P, Métivier L, Collilieux X (2016) ITRF2014: A new release of the International Terrestrial Reference Frame modelling nonlinear station motions, *Journal of Geophysical Research: Solid Earth* 121: 6109-6131.
- Brown NJ, McCubbine JC, Featherstone WE, Gowans N, Woods A, Baran I (2018) AUSGeoid2020 combined gravimetric-geometric model: Location-specific uncertainties and baseline-length-dependent error decorrelation, *Journal of Geodesy* 92(12): 1439-1456 & 1467.
- Dach R, Lutz S, Walser P, Fridez P (2015) Bernese GNSS software version 5.2, Astronomical Institute, University of Bern, Switzerland, <http://www.bernese.unibe.ch/docs/DOCU52.pdf> (accessed Feb 2020).
- Featherstone WE, McCubbine JC, Claessens SJ, Belton D, Brown NJ (2019) Using AUSGeoid2020 and its error grids in surveying computations, *Journal of Spatial Science* 64(3): 363-380.
- GA (2020a) AUSPOS – Online GPS processing service, <http://www.ga.gov.au/scientific-topics/positioning-navigation/geodesy/auspos> (accessed Feb 2020).
- GA (2020b) Asia-Pacific Reference Frame (APREF), <https://www.ga.gov.au/scientific-topics/positioning-navigation/geodesy/asia-pacific-reference-frame> (accessed Feb 2020).
- Gakstatter E, Silver M (2013) A comparison of free GPS online post-processing services, *GPS World*, <https://www.gpsworld.com/a-comparison-of-free-gps-online-post-processing-services/> (accessed Feb 2020).
- Gowans N, McElroy S, Janssen V (2015) Survey infrastructure preservation and upgrade: Trigonometrical stations in NSW, *Proceedings of Association of Public Authority Surveyors Conference (APAS2015)*, Coffs Harbour, Australia, 16-18 March, 67-84.
- ICSM (2007) Standards and practices for control surveys (SP1), version 1.7, <http://www.icsm.gov.au/sites/default/files/2017-05/sp1v1-7.pdf> (accessed Feb 2020).
- ICSM (2014) Standard for the Australian survey control network (SP1), version 2.1, <http://www.icsm.gov.au/publications/standard-australian-survey-control-network-special-publication-1-sp1> (accessed Feb 2020).
- ICSM (2020a) GDA2020 and GDA94 technical manuals, <http://icsm.gov.au/datum/gda2020-and-gda94-technical-manuals> (accessed Feb 2020).
- ICSM (2020b) Australian Vertical Working Surface, <https://www.icsm.gov.au/australian-vertical-working-surface> (accessed Feb 2020).
- IGS (2020) International GNSS Service products, <http://www.igs.org/products> (accessed Feb 2020).
- Janssen V, Gowans N, Hine S, McElroy S (2019) Removing the uncertainty surrounding Positional Uncertainty and Local Uncertainty in SCIMS, *Azimuth* 58(8): 28-32.
- Janssen V, Haasdyk J, McElroy S (2016) CORSnet-NSW: A success story, *Proceedings of Association of Public Authority Surveyors Conference (APAS2016)*, Leura, Australia, 4-6 April, 10-28.
- Janssen V, Watson T (2018) Performance evaluation of AUSGeoid2020 in NSW, *Proceedings of IGNSS Symposium 2018 (IGNSS2018)*, Sydney, Australia, 7-9 February, 15pp.

- Jia M, Dawson J, Moore M (2014) AUSPOS: Geoscience Australia's on-line GPS positioning service, *Proceedings of 27th International Technical Meeting of the Satellite Division of The Institute of Navigation (ION GNSS+ 2014)*, Tampa, Florida, 8-12 September, 315-320.
- Jia M, Dawson J, Moore M (2016) Upgraded AUSPOS and refined solution uncertainty, presented at *IGNSS Symposium 2016 (IGNSS2016)*, Sydney, Australia, 6-8 December.
- NSW Spatial Services (2019) Surveyor General's Direction No 12: Control Surveys and SCIMS, https://www.spatial.nsw.gov.au/surveying/surveyor_generals_directions (accessed Feb 2020).
- NSW Spatial Services (2020a) CORSnet-NSW, <http://www.corsnet.com.au/> (accessed Feb 2020).
- NSW Spatial Services (2020b) AUSPOS submission, https://www.spatial.nsw.gov.au/surveying/surveying_services/forms_and_applications/auspos_submission (accessed Feb 2020).
- Roelse A, Granger HW, Graham JW (1971) The adjustment of the Australian levelling survey 1970-1971, *Technical Report 12*, Division of National Mapping, Canberra, Australia, 81pp.